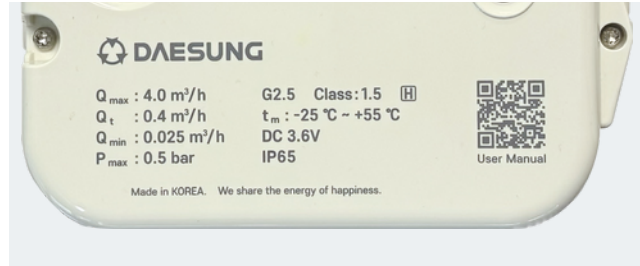


ULTRASONIC SMART GASMETER



Key Features

- Ultrasonic Transducer (PMUT/CERAMIC)
- Shut-off valve
- Different technologies of communication (LoRaWAN / NB-IoT / GSM)
- Aluminum body
- Simple user interface
- Right and Left direction production
- Reverse flow blocking device (optional)

Specification

Tech Specs	Model		
	G1.6	G2.5	G4
Maximum flow Rate	2.5 m³/h	4 m³/h	6 m³/h
Minimum flow Rate	0.016 m³/h		
Accuracy Class	1.5		
Measuring Gas	LPG / Natural gas		
Maximum Operating Pressure	0.5 bar		
Working Temperature	-25°C ~ +55 °C		
Temperature at base conditions	15°C		
Load Loss	≤ 2mbar		
Protection Grade	IP65		
Communication Protocol	LoRaWAN / NB-IoT / GSM		
Shut-off valve	Integrated safety		
Battery Life	10 years		
Standard and Certification	EN14236 / WELMEC 7.2		
Intrinsic Safety	ATEX Zone 2 (EX II 3G ic II B T3 Gc)		